

CERTIFIED LAND CORNER RECORDATION

DESCRIPTION OF CORNER EVIDENCE FOUND, AND ORIGINAL RECORD (If known)

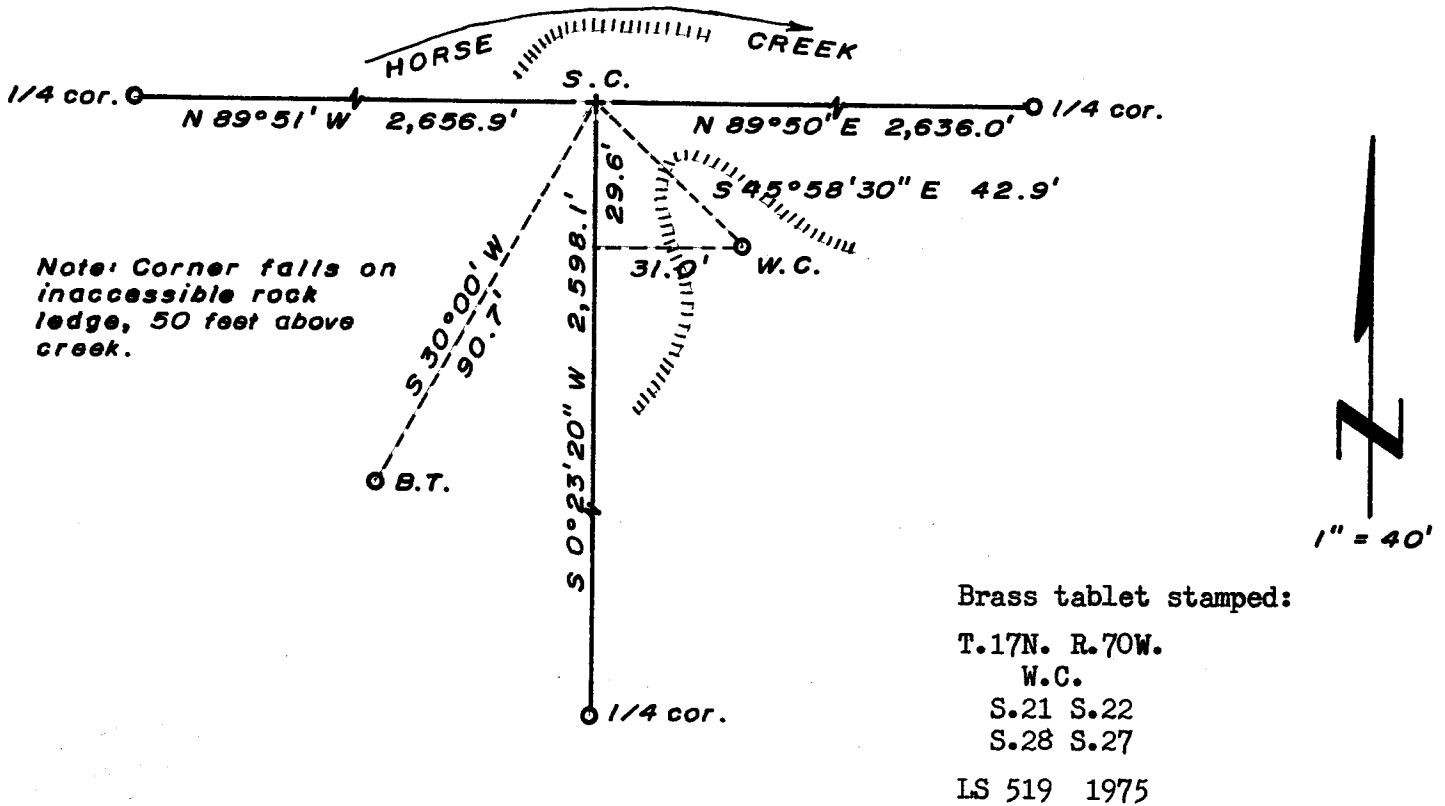
LOCATION Found G.L.O. bearing tree, 18" dia. Pine snag with open blaze and scribing.
 S.21 S.22 G.L.O. record - "Set a Granite Boulder 18 x 10 x 10 for corner to Secs. 21 -
 S.28 S.27 22 - 27 & 28 from which a Pine tree 18 inch dia. Bears S. 30° W. 232 lks. dist. This corner is about 25 lks from the edge of the perpendicular bank to Horse Creek, about 50 feet high." [John B. Thomas, 1872]
 T.17N., R.70W. Corner re-established from G.L.O. bearing tree.
 6th P.M.

DESCRIPTION OF MONUMENT AND ACCESSORIES ESTABLISHED TO PERPETUATE THE ORIGINAL LOCATION OF THIS CORNER:

At the corner: Corner position falls on inaccessible rock ledge, no monument set.
 Accessories: Set a 2" dia. brass tablet, in drill hole, on rock face (solid granite); S 45° 58' 30" E, 42.9 feet distant.

Note - Corner position was re-established by using the record bearing to the bearing tree and the extension of the section line south of the 1/4 corner to Secs. 27 & 28.

SKETCH, WITH COURSE AND DISTANCE TO ADJACENT CORNER IF DETERMINED IN THIS SURVEY.
 (May Sketch or Paste Reproduction on Reverse Side.)



I, R.L. Hudson certify that I have carefully performed or reviewed the work done on the diagrammed corner as reported on this recordation form and approve the same.

R.L. Hudson Wyoming L.S. No. 519
 Signature of Surveyor Registration No.

STATE OF WYOMING,
 Office of Clerk and Recorder,
 County of Laramie

This "corner record" was filed for record on the 20 day of August, 1975, was noted on the cross-index plat and is assigned page No. _____, in book No. _____.

Janet C. Whitehead
 County Official

Cross Index No. <u>R-13</u>	T. <u>17</u>	R. <u>70</u>	Mer.
_____	T. _____	R. _____	Mer.
_____	T. _____	R. _____	Mer.
_____	T. _____	R. _____	Mer.
_____	T. _____	R. _____	Mer.
_____	T. _____	R. _____	Mer.
_____	T. _____	R. _____	Mer.

The State of Wyoming } ss
County of Laramie

This instrument was filed for record
at 2:10 o'clock P. M. on the
20 day of August
A. D. 19 21 and duly recorded in
book _____ on page _____

Janet C. Mitchell

County Clerk & Ex-Officio Register at Deeds
By _____ Deputy